

Lamp Current (A): 3.2A  
 Ignitor Voltage (Min.): 0.6KV  
 Luminaire Rating: Enclosed  
 Burning Position: Universal

### HIT 400W/U/EURO/4K

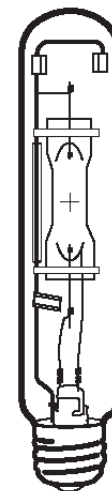
**Product Number: 25830**

**Lamp Type:** Euro Metal Halide

**Control Gear:** Mercury Ballast + 750V Ignitor or CWA Gear

#### Performance Data

Light Output (Lumens @ 100 hours)	36000V / 32400H
Lamp Lumens Per Watt	90
Rated Life (Hrs. @ 10 Hr. /Start)	15000V / 11250H
Correlated Colour Temperature (K)	4000
Chromaticity (CIE - X Y)	385, 390
Colour Rendering Index (CRI) or (Ra)	68
Typical Warm Up Time (Minutes)	3-5
Typical Hot Restart Time (Minutes)	10-15
Burning Position	Universal



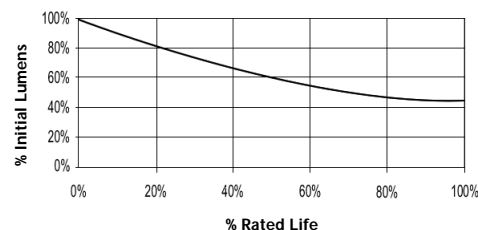
#### Physical Data / Requirements

Base Designation	E40
Bulb Designation	T46
Bulb Diameter (mm)	46
Max. Overall Length (mm)	285
Light Centre Length (mm)	175
Effective Arc Length (mm)	35.4
Max. Base Temperature (°C)	250
Max. Bulb Temperature (°C)	500
Luminaire Type	Enclosed
Socket Pulse Rating (KV)	4

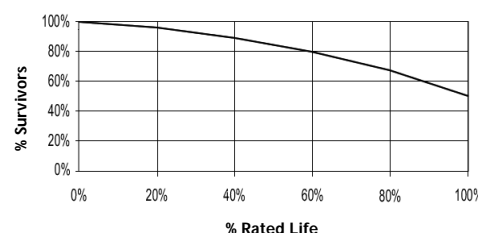
#### Lamp Electrical Data / Requirements

IEC Standard	-
Lamp Wattage (W)	400
Lamp Operating Voltage (V)	135
Lamp Operating Current (Amps)	3.2
Min. Open Circuit Voltage (RMS)	198
Min. Starting Pulse (Peak V)	600
Min. Pulse Width at 540V (microseconds)	1
Min. Pulse Rate Per ½ cycle	1
Pulse Position (Electrical Degrees)	60-90, 240-270

**Lumen Maintenance**



**Lamp Mortality**



**Revision:** 28/02/2006

#### Notes:

The specification contains data about typical performance on 50Hz sine wave ballast at nominal power. Actual values may depend on ballast and applications. Complies with (CE), Low Voltage (CE), WEEE and RoHS Directives.

This lamp is also compatible with a 3.0-4.5kV ignitor