

TAPERED POLE - POST TOP

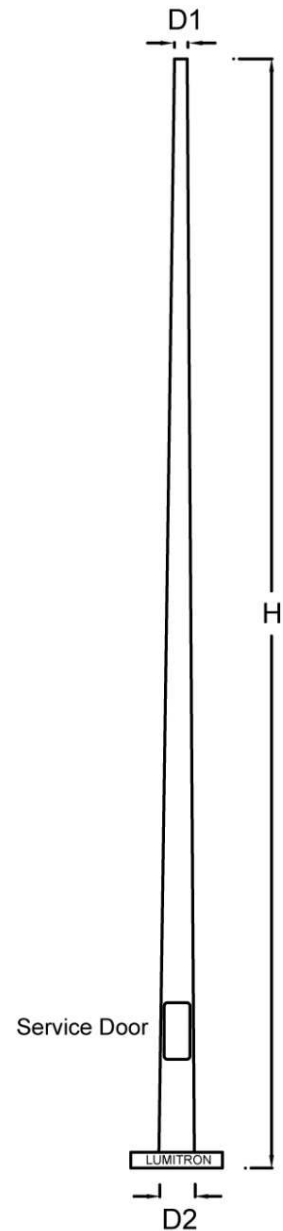
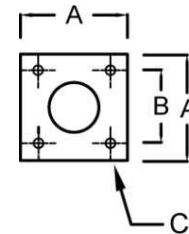
Round Pole

Standard pole of Department of Highways, The Metropolitan Electricity Authority and The Provincial Electricity Authority for pole top, floodlight and street light.

- Round pole made of one piece hot roll sheet steel. Thickness 3.2-4.5mm, yield point less than 25Kg/mm², tensile strength less than 41 Kg/mm² and stretched less than 21%.
- Hot-dip Galvanized, Standard ASTM A525-76
- Fuse with Service Door
- 1 Pole /4 Nuts and Screws
- Standard BS1840/1960

Accessories

- Bracket arm for installation floodlight, T Shape or X Shape
 - -BA-T1: 1xFloodlight
 - -BA-T2: 2xFloodlight
 - -BA-T3: 3xFloodlight
 - -BA-T4: 4xFloodlight
- J-Bolt 3/4 in + Nuts + Screw, mounting 4m
- J-Bolt 1 in + Nuts + Screw, mounting 5-14m
- Fuse



LUMITRON REF.	H (m)	D1/D2 (mm)	A	B	C	Weight (Kg)
LMRT-P03.0	3.0	60/103	300	200	22	52
LMRT-P04.0	4.0	60/117	350	250	22	66
LMRT-P05.0	5.0	60/131	350	250	32	79
LMRT-P06.0	6.0	60/146	350	250	32	85
LMRT-P07.0	7.0	60/160	350	250	32	105
LMRT-P08.0	8.0	60/174	380	250	32	128
LMRT-P09.0	9.0	60/189	400	300	32	150
LMRT-P10.0	10.0	76/219	450	350	32	197
LMRT-P12.0	12.0	76/247	450	350	32	237
LMRT-P14.0	14.0	89/246	600	400	38	346