

LMDL - 64

Halogen Surface Downlight

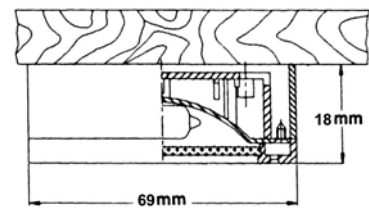
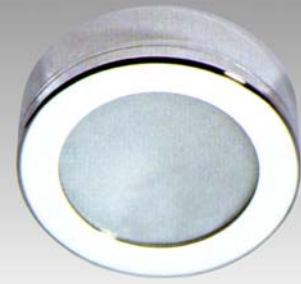
Applications

- A recessed small downlight, Lumitron's LMDL-64, is suitable for low voltage halogen JC. Ideal for limited space such as wardrobes or inside the furniture or even for decorations in hotel, shopping, arcades, department stores, condominiums, discount stores, commercial lighting applications, exhibition halls, exclusive residential projects, and etc.

Specifications

- Housing: metal body and trim polyester powder-coated.
- Reflector: heat resistant, high quality anodized aluminium reflector.
- Glass cover
- Suitable for 12V JC 20W.
- Polyester powder-coating in: (add suffixes to Lumitron Ref.)
 - ❑ -SL: Silver color
 - ❑ -WH: White color
 - ❑ -G: Gold color
 - ❑ -BK: Black color
- Lampholder: G4, ceramic type.
- Transformer: magnetic or electronic transformer .
- Mounting: recessed mounting by supporting clips and fasteners.
- Diameter 69mm.

LUMITRON: LMDL-64



Ordering Information

Lumitron Ref.	Lamp Type	Lumen	Color Temp.	Base	Remark
LMDL-64-20JC	JC 20W	320	3,000°K	G4	