

Recessed Fluorescent



LRT-M-DBP

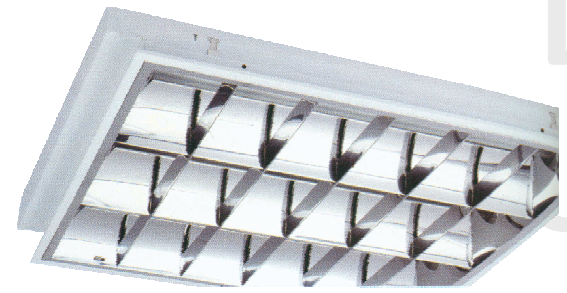
Recessed Double Parabolic Mirror Louver

Applications

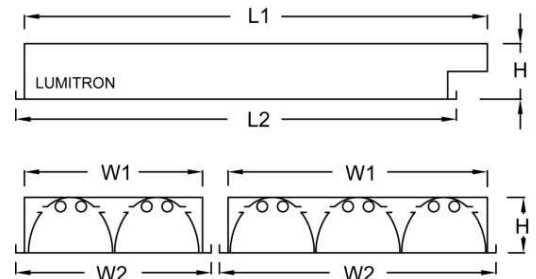
- Diverse applications for office buildings, especially executive offices, commercial areas for specialized and precious item store
- Specifically suitable for indoor-uses in VDT areas (Visual Display Terminals) or control rooms to minimize glare level. Providing energy-efficient lighting and lighting pollution is also limited.

Specifications

- Heavy-duty housing, die-formed from code-gauge cold-rolled steel housing.
- Housing thickness available.
 - ☐ T6: 0.6 mm. ☐ T8: 0.8 mm.
- ☐ -Rotary-locked lampholder and starter holder (standard offer).
- Lumitron employs a sophisticated technology of parabolic forming to combine both longitudinal and transverse vanes with specific lamp location to achieve high performance light-distribution control.
- ☐ -Back Reflectors – 99.85% purity aluminium mirror finish to provide overall reflectance of 87% (standard offer). (Materials for both reflectors and louvers from Germany.)
- Louvers – Mirror finish, 99.8% high purity anodized aluminium (materials from Germany) on both longitudinal and transversal (double parabolic) to minimize glare. Average luminance above the cut-off 55° elevation angle restricted to less than 200 cd/m², at all azimuth angle around the luminaire. Specially designed to comply and meet requirements of The Charter Institute of Building Service Engineers Lighting Guide No.3, CIBSE Lighting Guide 3 Category CAT1 36W: Nx27 cells, 18W: Nx14 cells per lamp.



LRT-M-DBP 336



Finish - Multi-stage (six) iron-phosphate pretreatment to ensure superior paint adhesion and maximum corrosion resistance. High reflectance finished with glossy, baked white enamel (polyester) powder giving a smooth resilient finish.

Wiring – Standard version provided with 70°C, THW 1.0 sqmm cable.

Installation – Recessed mounting T-Bar ceiling and for concealed ceiling system (Gypsum Board).

LUMITRON REF	Code	Lamp	L1	L2	W1	W2	H
LRT-M-DBP	-118	1X18W	636	595	249	295	115
	-218	2X18W	636	595	249	295	115
	-218F	2X18W	636	595	549	595	115
	-318	3X18W	636	595	549	595	115
	-418	4X18W	636	595	549	595	115
	-136	1X36W	1243	1195	249	295	115
	-236	2X36W	1243	1195	249	295	115
	-236F	2X36W	1243	1195	549	595	115
	-336	3X36W	1243	1195	549	595	115
	-436	4X36W	1243	1195	549	595	115